

### What are the risks associated with a CT ?

CT scans are performed using x-rays. The dose of x-ray radiation needed for a CT scan is much more than for a single x-ray, but in many situations the benefit of a CT scan greatly outweighs the risk.

The contrast that is used contains iodine which some people are allergic to. There is also a risk that contrast can go into the surrounding tissue rather than the vein causing pain and swelling (extravasation). It is important to inform the radiographer if you experience any pain as the contrast dye is injected and they will stop the scan if necessary.

### How long will a CT Urogram take?

Although CT scans can be quick you should prepare to be in the CT department for approximately 60 - 90 minutes. Occasionally other patients may need to be scanned urgently meaning that your appointment could be delayed.

### How will I get the results of my CT scan?

The results will not be available immediately. The results will be sent to the clinician who referred you for the scan.

### Directions (Beaumont Hospital)

The CT department is located in the radiology department, on the lower ground floor of the hospital. Please check in at the main x-ray reception desk on arrival.

### Directions (St. Joseph's Hospital)

St. Joseph's Hospital is located on Springdale Road, Raheny, Dublin 5, approximately 12 km from the centre of Dublin. St. Joseph's is convenient to several bus routes and a short walk from Raheny DART Station. The 17, 29A, 31, 31A, 32, 32A, and 42A buses run from Eden Quay. The estimated bus time to Raheny Village is 20 minutes. Parking for patients and visitors is available on the St Joseph Hospital grounds. Cars are parked at owner's own risk. **Please contact the Hospital (01) 877 4900 for directions if you are unsure of the route.**

Date Issued: August 2021

Review date: August 2023

Author(s): Radiography Management Team

Approved by: Imaging and Interventional Radiology Directorate Team



**Beaumont Hospital  
Imaging and Interventional  
Radiology Directorate**

## **CT UROGRAM Patient Information**

### **Welcome to the CT Scan Department**

#### ***Important Note***

*Please check your appointment letter as to whether your CT examination appointment is scheduled for **Beaumont Hospital** or **St. Joseph's Hospital, Raheny**.*

**Please contact 01-8092786 if you wish to reschedule your appointment.**

## Introduction

A CT Urogram has been requested for you and this leaflet explains what the scan involves and what you need to do to prepare for your scan.

## What is a CT scan?

CT scans are performed using x-rays, which are a type of radiation. A CT (computerised tomography) scan is a specialised x-ray examination, which can produce cross-sectional images of any part of the head or body.

## Will I receive much radiation?

The amount of radiation you receive is relatively small and the risks are low. The radiation dose you receive from this scan is similar to that which you would receive naturally from your environment ranging from 6 months to 4 years, depending on your scan type. Your doctor will have weighed the benefit of improved diagnosis of your condition against the risk of the radiation exposure.

**What happens during the CT Urogram?** The scanner is a large, ring-shaped machine. You will be asked to lie on a table that can slide slowly in or out of the centre of the ring. An IV line will be placed into a vein in your hand or arm through which the X-ray dye will be injected.

You may feel a warm, flushed sensation when the dye is injected, and have a metallic taste in your mouth for a minute or two. The contrast material may briefly make you feel like you have to urinate. The x-ray unit inside the ring will rotate around you as the table moves. You are not enclosed in a tunnel. The scan itself takes approximately 10 minutes to complete. You may be asked to inhale, exhale or hold your breath at certain points during the scan. It is important to remain very still during the examination.

The radiographer will operate the scanner from a control room behind a thick lead glass window. He or she will be able to see, hear and speak to you during the procedure.

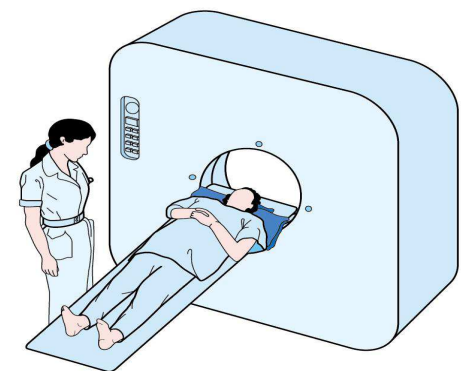
**It is important to tell your doctor and / or contact the CT department on 01-8092786 PRIOR to your CT scan appointment if you:**

- Had a previous allergic reaction to x -ray contrast
- Have any allergies
- Have asthma
- Are diabetic and taking metformin (glucophage; janumet)
- Have reduced renal function
- **Are pregnant or breastfeeding**

## What preparation is needed for a CT Urogram scan?

You **do not need to fast** for a CT Urogram. Take all medications as normal.

Any metal objects such as jewellery will need to be removed from the part of the body being scanned.



**Directions Note:** Please check your appointment letter to confirm if your CT scan is booked for Beaumont or St Joseph's Hospital Raheny.