

PROGRAMME



FROM PREVENTION TO PERSONALISED CARE



PROGRAMME

09:15 - 10:00	Registration
10:00 - 10:10	Welcome Address - Ms Claire Noonan, COO, Beaumont Hospital
SESSION 1: PREVENTION AND EARLY DETECTION	
10:10 - 10:30	Next Generation Sequencing <i>Delivered by Ms Teresa Loftus</i> Chief Medical Scientist, Molecular Pathology, Beaumont RCSI Cancer Centre
10:30 - 10:50	Prevention & Early Detection <i>Delivered by Professor Patrick Redmond</i> General Practitioner and Associate Professor in General Practice at RCSI University of Medicine and Health Sciences
10:50 - 11:15	Lung Cancer Screening <i>Delivered by Professor Daniel Ryan</i> Respiratory Consultant, Lung Health Check Clinical Lead, Beaumont RCSI Cancer Centre
11:15 - 11:20	Closing Remarks Ms Nikki Gallagher CEO Irish Cancer Society - Lung Health Check
11:20 - 11:30	Discussion Panel featuring Patient Partner; Roberta Horgan Patient Advocate and Chairperson, Lynch Syndrome Ireland
11:30 - 11:50	Refreshments and Poster Viewing

PROGRAMME

SESSION 2: CANCER INNOVATION

11:50 - 12:10	<p>Post Operative Outcomes in Breast Cancer</p> <p><i>Delivered by Professor Arnold Hill</i></p> <p>Dean of Medical Programme RCSI and Consultant Surgeon, Beaumont RCSI Cancer Centre</p>
12:10 - 12:30	<p>SABR Prostate</p> <p><i>Delivered by Professor Brian O'Neill</i></p> <p>Consultant Radiation Oncologist, St. Lukes' Radiation Oncology Network, Beaumont RCSI Cancer Centre</p>
12:30 - 13:00	<p>Digital Neuro-Pathology</p> <p><i>Keynote: Professor Margaret Flanagan</i></p> <p>Associate Professor and Chair of Neurodegenerative Diseases, University of Texas Health Science Center at San Antonio <i>and</i></p> <p>Dr David Gutman</p> <p>Associate Professor in the Department of Pathology at Emory University School of Medicine</p>
13:00 - 13:10	<p>Discussion Panel featuring Patient Partner; Martin Sweeney</p> <p>Prostate Cancer Patient Advocate and Secretary of UCAN</p>
13:10 - 14:00	<p><i>Lunch and Poster Viewing</i></p>

PROGRAMME

SESSION 3: PERSONALISED CARE AND SURVIVORSHIP

14:00 - 14:20	Endoscopic Resection of Upper GI Cancer <i>Delivered by Professor Danny Cheriyan</i> Consultant Gastroenterologist, Clinical Lead Advanced Endoscopy, Beaumont RCSI Cancer Centre
14:20 - 14:40	Psycho-Oncology <i>Delivered by Dr Vicky Cooper Lunt</i> Honorary Clinical Lecturer RCSI, Head of Psychology Department Beaumont RCSI Cancer Centre
14:40 - 15:10	Minimally Invasive Breast Surgery: Current Role of Endoscopic and Robotic Mastectomy <i>Keynote: Professor Antonio Toesca</i> Director of the Breast Surgery Program at the Candiolo Cancer Institute - Torino IRCCS
15:10 - 15:20	Discussion Panel featuring Patient Partner; Cormac France, Patient Advocate and Chairperson Irish Penile Cancer Support Group
15:20 - 15:30	<i>Award Presentations and Closing Remarks</i>

SPEAKERS

Ms Teresa Loftus

Ms Teresa Loftus is the Chief Medical Scientist in the Molecular Pathology Laboratory at Beaumont Hospital. She brings over 15 years of experience in clinical molecular diagnostic testing, playing a central role in advancing her service to operate at international ISO15189:2022 standards. This commitment to quality ensures the highest levels of safety and accuracy in patient results.

She leads a team of highly skilled and dedicated scientists, guiding the laboratory through the rapidly evolving field of genomic medicine. With a strong interest in integrating innovation with clinical care, she works to bridge the gap between research and diagnostic practice, ensuring the patient remains central to every process and that each sample is managed to the highest standards of care.

In addition to her clinical leadership, she lectures on programmes at Trinity College Dublin (TCD) and Technological University Dublin (TUD), creating a learning environment for students interested in molecular diagnostics. She actively supports both undergraduate and postgraduate research in her department, helping where possible to guide the next generation of scientists in the field.

Teresa's core ethos is to advance molecular diagnostics and deepen understanding, in order to improve patient outcomes.

SPEAKERS



Professor Patrick Redmond

Professor Patrick Redmond is a General Practitioner and Associate Professor in General Practice at RCSI University of Medicine and Health Sciences. He is Director of PRiCAN (Primary Care Research into Cancer), where he leads the development of research infrastructure to advance early cancer detection and survivorship within primary care. He oversees a large, multidisciplinary team spanning clinical academics, trainees, research assistants, postdoctoral researchers, and postgraduate students.

His research focuses on improving diagnostic practice and patient outcomes across the cancer pathway, integrating epidemiology, prediction modelling, electronic health records, health economics, and implementation science.

A growing element of his work involves the application of artificial intelligence and machine learning, with a strong emphasis on clinically responsible and practical implementation in healthcare settings.

Patrick also contributes to health system leadership as a member of the Beaumont Hospital Board, where he chairs the Clinical Governance Committee. He is active in international research networks, including CaPRI, and supports the development of future GP academic leaders through his role on the ICGP GP Training Academic Council.

At RCSI, he leads the General Practice teaching programme and is committed to mentoring colleagues at all stages of their careers.

SPEAKERS



Professor Daniel Ryan

Professor Daniel Ryan, MB Bch MAO MD FRCPI, is a Consultant Respiratory Physician in Beaumont Hospital, Dublin, Ireland. His subspecialty areas of interest include Lung Cancer, advanced Bronchoscopy, Pleural disease and intervention, liquid biopsy and Lung cancer screening. He is the Co-Chair of the lung cancer MDT for the Beaumont/RCSI area. He has a Doctorate (MD) in lung cancer research from the Royal College of Surgeons in Ireland (RCSI) and postgraduate qualifications in Healthcare management and Clinical education.

Prior to returning to Ireland, He completed fellowships in Thoracic Oncology and Pleural Medicine in Manchester, UK. He is the Clinical lead of the Beaumont RCSI Lung Health Check, Irelands first Community based Lung Cancer screening Pilot.

SPEAKERS



Professor Brian O'Neill

Professor Brian O'Neill is a Consultant Radiation Oncologist at St Luke's and Beaumont Hospitals and an Honorary Clinical Associate Professor, RCSI University of Medicine and Health Sciences. His specialist interests are Prostate Cancer including Prostate SABR, and Gastro-Intestinal Radiation Oncology. He has served as Principal Investigator on several national and international trials including TRILARC (Rectal), Neo-AEGIS (Oesophageal), PACE-C (Prostate), PACE-NODES (Prostate) and INSPIRE (Prostate SABR) and remains a national leader in multidisciplinary research.

Professor O'Neill is an Author of the National Cancer Control Programme (NCCP) clinical guidelines for upper and lower GI cancers and for Prostate Cancer. He is a former co-Chair of the Cancer Trials Ireland GI disease-specific subgroup. He is a member of the NCCP National Colorectal Cancer Clinical Leads.

Professor O'Neill is the Author of numerous peer-reviewed publications and has lectured extensively. Professor O'Neill's work is driven by a strong belief in patient-centred care, access equity, and the importance of Irish participation in global cancer research.

SPEAKERS



Professor Danny Cheriyan

Professor Danny Cheriyan is a Consultant Gastroenterologist and Honorary Clinical Associate Professor at the Royal College of Surgeons in Ireland (RCSI), specialising in advanced endoscopy and hepatobiliary medicine.

He graduated with honours from RCSI in 2005 and completed specialist training at Beaumont Hospital and St. Vincent's University Hospital, Dublin. A UCD Newman Scholar, he was awarded an MD for research in colorectal cancer and angiogenesis. He undertook advanced fellowships in endoscopy at the University of British Columbia, Canada, and hepatobiliary medicine at Duke University, USA.

Appointed Consultant at Beaumont Hospital in 2016 and Honorary Clinical Associate Professor in 2023, he has held leadership roles including Associate Clinical Director for Medicine and Clinical Lead for Endoscopy. He is currently Programme Director for International Residency Training at the Royal College of Physicians of Ireland (RCPI).

His clinical practice focuses on advanced therapeutic endoscopy, including early GI cancer resection, endoscopic ultrasound (EUS), and ERCP. He is widely published and has authored several book chapters.

SPEAKERS

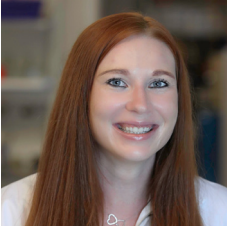


Dr Antonio Toesca

Dr Antonio Toesca is Director of the Breast Surgical Oncology Program at Candiolo Cancer Institute FPO-IRCCS, Italy, where he leads a multidisciplinary breast cancer care program. He is Principal Investigator of the Robotic Breast Cancer Surgery Program in Europe and directs an international training program for robotic breast surgery.

Dr Toesca serves as Professor in the Master's Degree Course of Mastology in Madrid and is a member of the Educational Committee of the Italian School of Breast Disease. He is actively involved in clinical research, international education, and the development of collaborative breast cancer networks nationally and internationally. Dr Toesca is a frequent invited speaker at international scientific meetings and author of numerous peer-reviewed publications, editorials, and book chapters focused on minimally invasive and robotic breast surgery.

SPEAKERS



Dr Margaret E. Flanagan

Dr Margaret E. Flanagan, MB Bch BAO, is physician-scientist and board-certified neuropathologist with an international reputation in Alzheimer's disease and related neurodegenerative disorders. She serves as Associate Professor of Pathology and Laboratory Medicine at the University of Texas Health San Antonio and is Director of the Neuropathology Core for the South Texas Alzheimer's Disease Research Center. She also co-directs the Brain Bank at the Biggs Institute for Alzheimer's and Neurodegenerative Diseases and leads a CLIA-certified biomarker laboratory focused on translational diagnostics.

Dr Flanagan's research integrates neuropathology, fluid biomarkers, and digital pathology to better understand mechanisms of cognitive decline, with a particular focus on vascular contributions, TDP-43 proteinopathy, and mixed neurodegenerative pathologies. She leads national efforts in digital neuropathology and data harmonization, including a federally funded initiative to develop a federated platform for large-scale image analysis across Alzheimer's Disease Research Centers.

A graduate of Trinity College Dublin, Dr Flanagan maintains strong international collaborations and is actively working to expand brain banking and research infrastructure globally. Her work is driven by both scientific rigor and personal commitment to advancing earlier diagnosis and treatment for dementia.

SPEAKERS



Dr Vicky Cooper Lunt

Dr Vicky Cooper Lunt is Head of the Department of Psychology at Beaumont Hospital, Dublin, leading a multidisciplinary psychology service across an acute hospital setting. Her clinical work is in Psycho-Oncology at the Beaumont/RCSI Cancer Centre, where, in collaboration with the National Cancer Control Programme, she has supported the development of the largest multidisciplinary psycho-oncology service in Ireland.

Her professional interests include translating national policy into high-quality local clinical practice, service development in acute healthcare settings, and embedding patient partnership within clinical services. She is particularly committed to integrating psychological expertise within multidisciplinary healthcare teams.

SPEAKERS



Professor Arnold Hill

Professor Arnold Hill is Professor and Chair of Surgery in RCSI, Beaumont and Dean of Medical Programmes at RCSI University of Medicine and Health Sciences. He graduated from UCD and did his basic surgical training in Dublin, and his middle grade surgical training in London.

He did a basic two-year fellowship with Dr John Daly at The Hospital of the University of Pennsylvania and The New York Hospital/Cornell Medical Center in the United States. He returned to Ireland to do his Senior Registrar training on the National Training Program in Ireland.

He also did a Clinical Fellowship in Surgical Oncology at Memorial Sloan Kettering Cancer Centre in New York prior to taking up his consultant appointment. His clinical interests are in the area of breast cancer and melanoma. His laboratory research interest are in the transcriptional control of breast cancer in particular the role of the coregulatory proteins.

SPEAKERS



Dr David Gutman

Dr David Gutman, MD, PhD is Associate Professor in the Department of Pathology at Emory University School of Medicine. After completing his PhD in Neuroscience and MD degree, Dr Gutman completed a residency in Psychiatry at Emory. Dr Gutman joined the faculty at Emory in 2009, originally in Biomedical Informatics, and now with a primary appointment in pathology.

Dr Gutman's research is focused on developing innovative tools for analyzing large imaging datasets, primarily focusing on whole slide images in pathology. He has been instrumental in creating the Digital Slide Archive platform and HistomicsTK, an open-source suite for managing and analyzing large-scale image sets. These tools have been widely used to investigate aspects of cancer biology research, particularly from TCGA related data sets. His group developed and maintains the Cancer Digital Slide Archive (CDSA), which houses all 27,000 TCGA pathology images.

Dr Gutman is now focused on adapting the Digital Slide Archive for neuropathology and neurodegenerative disease research. This work has led to the Brain Digital Slide Archive (BDSA), an open-source, federated platform designed to facilitate secure, multi-institutional sharing and scalable AI/ML analysis of whole-slide images for the Alzheimer's Disease and Related Dementias (AD/ADRD) community. His team is also optimizing the associated analysis toolkit, HistomicsTK, specifically for neuropathology digital slides to detect neurons, glia, and other common brain structures. In collaboration with teams at Kitware and Northwestern University, Dr Gutman has also contributed to developing open-source tools for image de-identification, further enhancing the utility and security of whole slide imaging datasets.

SPONSORS



ABSTRACTS

1. Empowering RTTs: A lean synthetic CT-based plan-of-the-day feasibility study for prostate radiotherapy patients with bladder filling challenges
Caitriona Kelly
2. Management Strategies and Clinical Outcomes for Thalamic Neuroepithelial Cysts: 10-Year Single Center Experience
Sami Almasri
3. Connectome-Based Glioma Resection: Assessing Clinical Outcomes Using Pre- and Postoperative Sughrue-Ivan Scoring
Sami Almasri
4. Cancer Care in Residential Care Facilities: A Scoping Review of Patient and Healthcare Worker Perspectives
Rincy Rajan
5. Psychosocial Issues and Needs of Adult Cancer Survivors in Ireland: An Evidence-Based Review
Rincy Rajan
6. Nucleophosmin 1(Npm1) As a Target For Kras Driven Non-Small Cell Lung Cancer
Zhuowen Wang
7. Temporal trends reveal rising breast cancer incidence among younger women and heterogeneity by subtype in Ireland
Aileen Burke
8. Dosimetric benefit of personalised PTV margin reduction for H&N radiotherapy
Claire Fitzpatrick
9. Evaluate and Improve Communication of Patient Outcomes from Cancer MDM Discussions to General Practitioners (GP)
Amy Lewis
10. Insights into the attitudes of healthcare staff towards the hospital's patient safety climate
Orla Kenny
11. Exhaled Breath Condensate as a Lung-Proximal Matrix for Cell-Free DNA Detection in Early-Stage Non-Small Cell Lung Cancer
Sile Toland
12. A Retrospective Review of a Standardised Dietetic Care Pathway for Oesophageal Cancer Patients at the Beaumont RCSI Cancer Centre
Cathy White
13. Malnutrition Risk Assessment in an Ambulatory Day Oncology Service
Nicola Obeirne
14. Precision in Practice: Molecular Pathology Driving Modern Diagnostics
Teresa Loftus
15. Investigation Into the Contribution of Pathogenic Germline Variants in Chromatin Remodelling Genes in Breast Cancer Predisposition
Emily Tinsley
16. Radiation Therapist led Quality Improvement Project establishing a pathway for automated hippocampal contouring for Hippocampal Sparing Radiotherapy
Linda Wlashe
17. Untangling the Influence of Metabolic Alterations on Immunotherapy Response in T cells
Ella Kearney
18. Malnutrition and Access to Dietetic Care among Patients with Cancer in Beaumont Hospital
Cathy White

ABSTRACTS

19. The Difference a Dietitian Makes: Access to Dietetic Care in Gastrointestinal (GI) Surgical Oncology
Cathy White
20. Characterisation of Bk Polyomavirus Integration in Urothelial Carcinoma Genomes of Kidney Transplant Recipients
Lauren McAuley
21. Development and optimisation of a bi-functional scaffold for localised tumour suppression and osteogenic regeneration
Harini Ganesh
22. Uncovering Biomarkers of Breast Cancer Cell Reawakening
Ciara Walsh
23. HDAC6 inhibition enhances T-cell function in non-small cell lung cancer
Sze Ying Tan
24. Genomic landscape and molecular evolution of HER2+ breast tumours from patients with variable response to neoadjuvant therapy
Brenda Nyarango
25. Benign biopsy patterns within a population-based breast screening setting in Ireland, 2008 to 2019
Aileen Burke
26. A multi-omic AI classifier for tissue-of-origin identification in metastatic tumours with unknown primary
Mohammad Ghosheh
27. An integrated mapping and harmonisation platform producing AI-ready multi-omic data from diverse sources for personalised cancer research
Mohammad Ghosheh
28. A multi-omic AI recurrence score to personalise post-resection surveillance intensity in colorectal cancer
Mohammad Ghosheh
29. Diffusion MRI in Glioma Surgery: Enhancing Extent of Resection While Preserving Neurological Function
Tania Haghight
30. A partner-agnostic approach for NTRK fusion detection in Neuro-oncology samples
Andrea Walsh
31. Improving Patient Access to Personalised Cancer Research Through Trial Coordinator-Led Informed Consent across St Luke's Radiation Oncology Network
Jackie McCann
32. Scaffold-Based mRNA Delivery for Localised Postoperative Immunotherapy in Breast Cancer
Na Zhao
33. Patient Perspectives on Breast Cancer Information Needs at Diagnosis
Claire Noonan



RCSI

RCSI Royal College of Surgeons in Ireland
123 St Stephen's Green, Dublin 2
Tel: +353 1 402 2100
Email: events@rcsi.com
rcsi.com



**BEAUMONT RCSI
CANCER CENTRE**

Beaumont RCSI Cancer Centre
Beaumont Hospital Campus,
Beaumont Road, Dublin 9.
Tel: +353 1 809 3000

CONFERENCE GUEST WIFI

Select RCSI-GUEST

Log in using the following details:

Password: RC\$1guest